



**Cherry Creek Fire Department**  
5920 Cherry Creek Road  
Port Alberni BC V9Y 8R7  
Phone 250.723.2254

March 13, 2025

Invitation to Quote

## **Re: Windows**

The Cherry Creek Fire Department invites companies to submit quotes for materials needed to construct a new fire hall. This community-focused initiative aims to provide the highest quality service to our residents.

We welcome quotes from vendors in their respective areas of expertise. Project specifications and additional details are attached. Please review the documents carefully and submit your quote by the specified deadline below. For any questions, contact our office.

Thank you for your attention to this invitation.

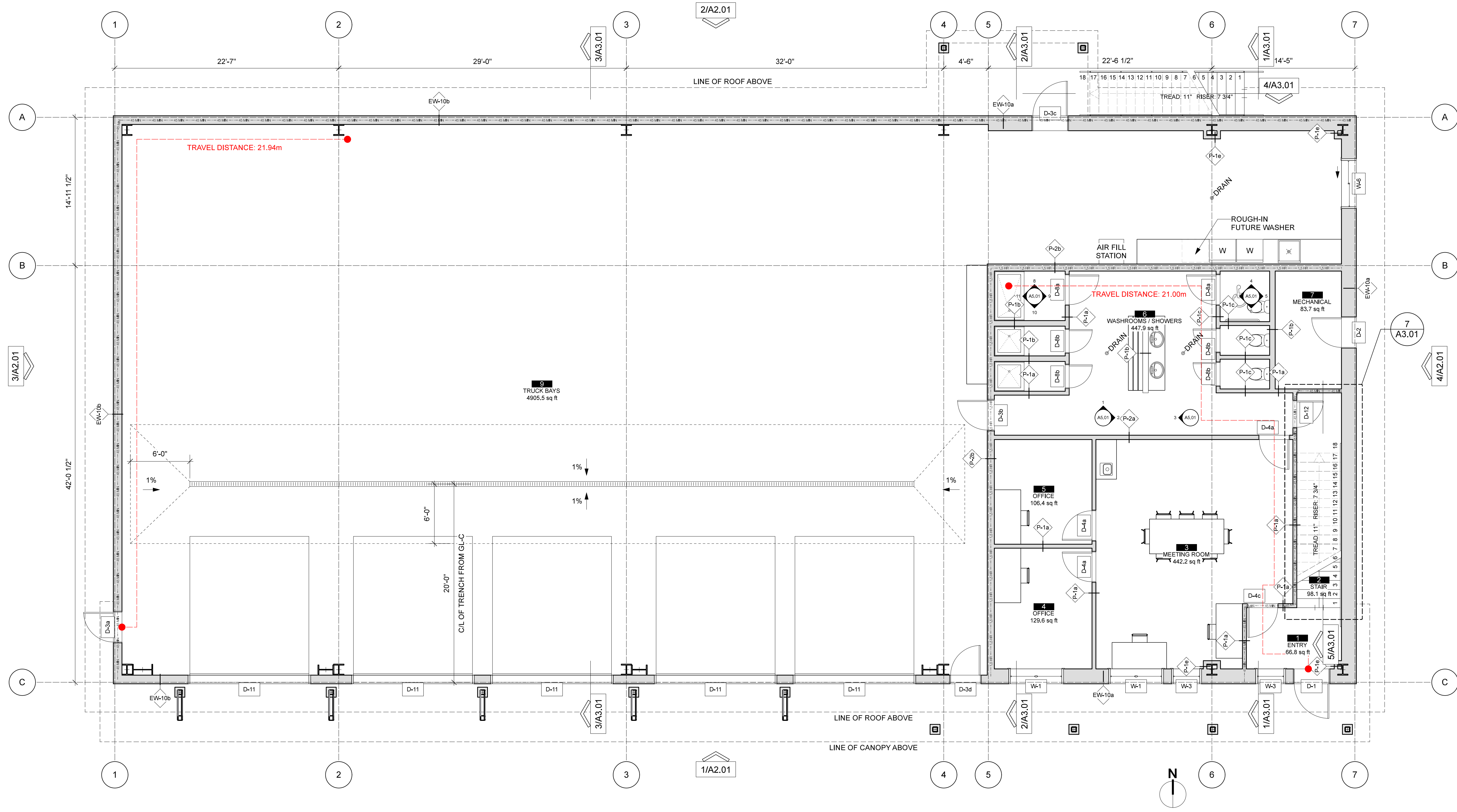
Sincerely,

A handwritten signature in blue ink that reads "Lucas Banton".

Lucas Banton, Fire Chief

Quotes to be submitted to: [ccwwacc@shaw.ca](mailto:ccwwacc@shaw.ca)

Preferred deadline: April 1, 2025



**1 FIRST FLOOR PLAN**  
 Scale: 3/16" = 1'-0"

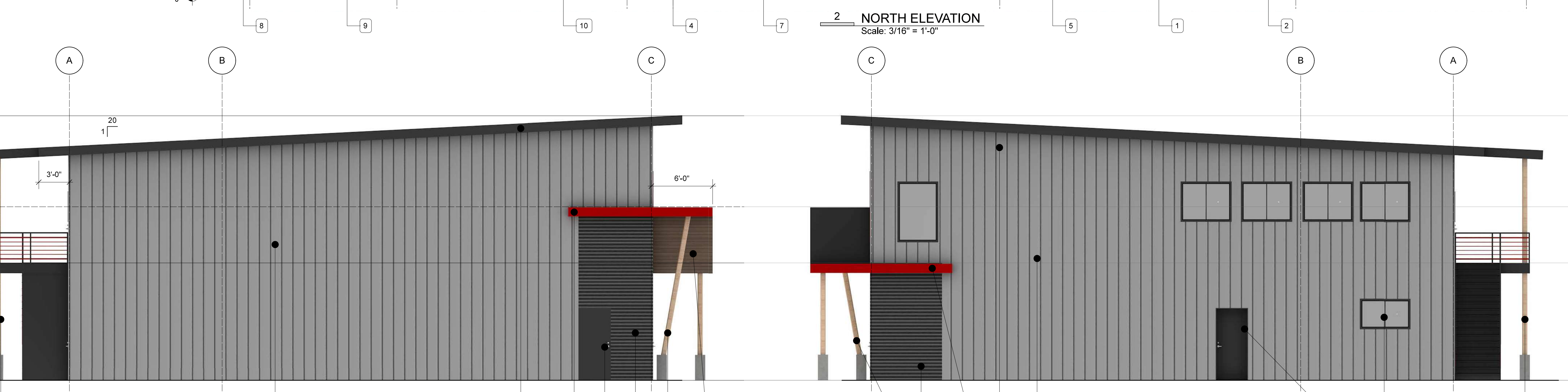
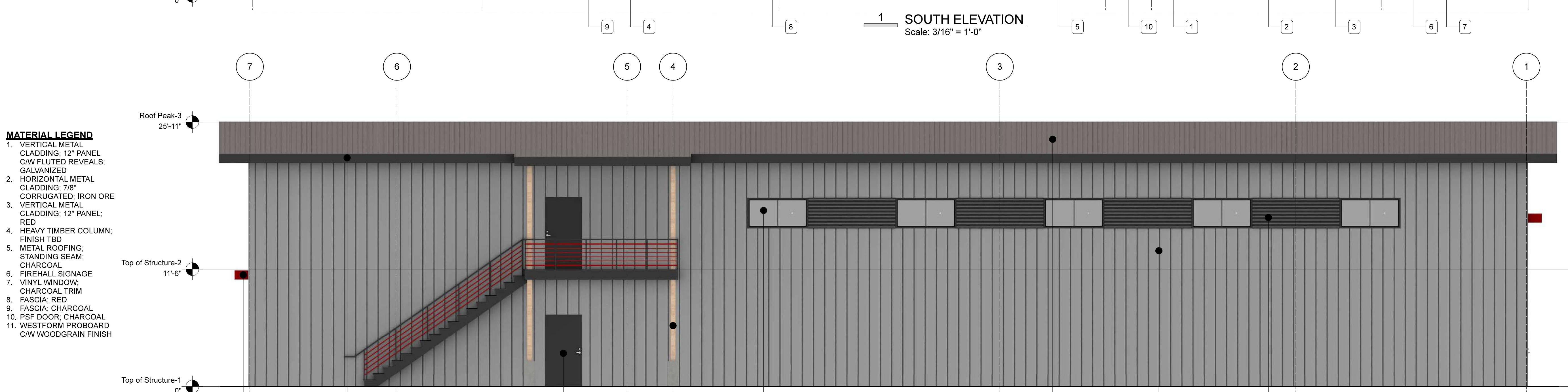
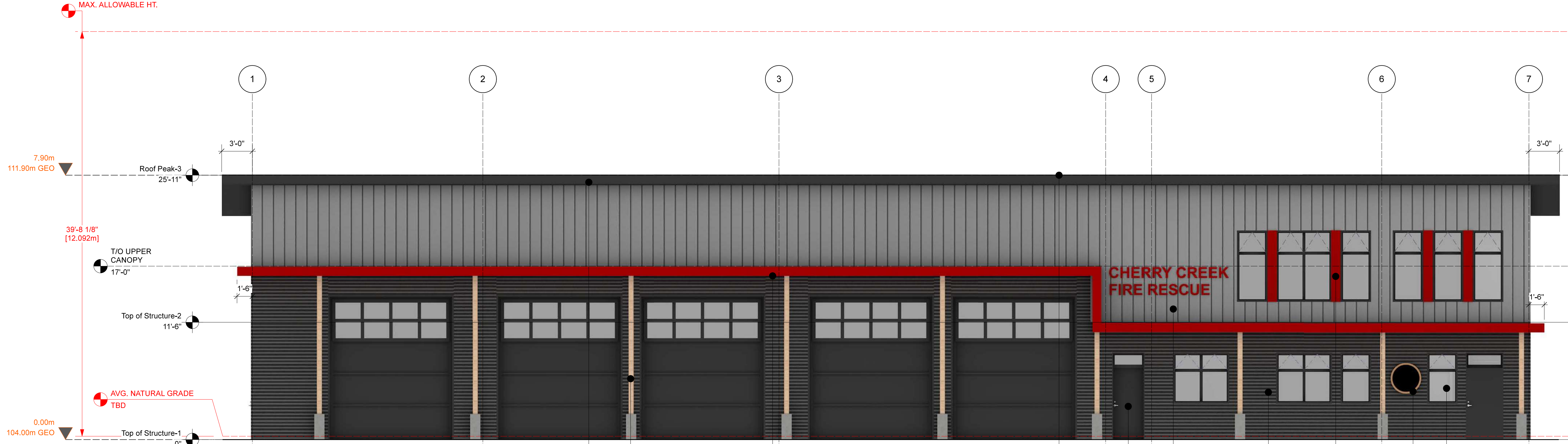
**CHERRY CREEK FIREHALL**  
 5820 CHERRY CREEK ROAD,  
 PORT ALBERNI, BC V9Y 8R7

| NO. | Y    | M  | D  | ISSUE                              |
|-----|------|----|----|------------------------------------|
| I   | 2024 | 07 | 25 | ISSUED FOR TENDER                  |
| H   | 2024 | 07 | 25 | ISSUED FOR BUILDING PERMIT R-1     |
| G   | 2024 | 06 | 10 | ISSUED FOR CONSULTANT COORDINATION |
| N   |      |    |    | Y M D ISSUE                        |

| NO. | Y | M | D | ISSUE    |
|-----|---|---|---|----------|
|     |   |   |   | REVISION |

SHEET TITLE  
**FIRST FLOOR PLAN**

DRAWING NO.  
**A1.01**



- MATERIAL LEGEND**
- VERTICAL METAL CLADDING: 12" PANEL C/W FLUTED REVEALS; GALVANIZED
  - HORIZONTAL METAL CLADDING: 7/8" CORRUGATED; IRON ORE
  - VERTICAL METAL CLADDING: 12" PANEL; RED
  - HEAVY TIMBER COLUMN; FINISH TBD
  - METAL ROOFING; STANDING SEAM; CHARCOAL
  - FIREHALL SIGNAGE
  - VINYL WINDOW; CHARCOAL TRIM
  - FASCIA; RED
  - FASCIA; CHARCOAL
  - PSF DOOR; CHARCOAL
  - WESTFORM PROBOARD C/W WOODGRAIN FINISH

EXTERIOR WALLS - PLAN VIEW

| INTERIOR INSULATED WOOD STUD PARTITION |                                                                                                                                                                                                                                                                                                                                                                                                                                                                      |                |
|----------------------------------------|----------------------------------------------------------------------------------------------------------------------------------------------------------------------------------------------------------------------------------------------------------------------------------------------------------------------------------------------------------------------------------------------------------------------------------------------------------------------|----------------|
|                                        | <p>EWA-10a<br/>CLADDING AS PER ELEVATIONS<br/>EXTERIOR WALL ASSEMBLY CW R-30 INSULATION - REFER TO STRUCT.<br/>3" (76mm) 35BMC GWP SHEATHING - REFER TO STRUCT.<br/>2x4 WOOD FRAMING CW BATT INSULATION TO FILL CAVITY - REFER TO STRUCT.<br/>VAPOR BARRIER, CAULKED AND SEALED AT FLATES<br/>1-LAYER 5/8" GYPSUM BOARD (PAINTED)</p> <p>EWA-10b<br/>CLADDING AS PER ELEVATIONS<br/>SAME AS EWA-10a BUT REMOVE SHEAR WALL SHEATHING, WOOD FRAMING AND INSULATION</p> |                |
| REQUIRED                               | PROVIDED                                                                                                                                                                                                                                                                                                                                                                                                                                                             | REFERENCE CODE |
| F.R.R.                                 | -                                                                                                                                                                                                                                                                                                                                                                                                                                                                    | -              |
| STC                                    | -                                                                                                                                                                                                                                                                                                                                                                                                                                                                    | -              |

PARTITIONS - PLAN VIEW

| INTERIOR WOOD STUD PARTITION |                                                                                                                                                                                                                                                                                                                                                                                                                                                                         |                |
|------------------------------|-------------------------------------------------------------------------------------------------------------------------------------------------------------------------------------------------------------------------------------------------------------------------------------------------------------------------------------------------------------------------------------------------------------------------------------------------------------------------|----------------|
|                              | <p>P-1a<br/>SAME AS P-2a BUT REMOVE 1-LAYER 5/8" GYPSUM BOARD (PAINTED) REFER TO STRUCT.</p> <p>P-1b<br/>1-LAYER 5/8" GYPSUM BOARD (PAINTED)<br/>2x4 WOOD FRAMING CW ACUSTIC BATT - REFER TO STRUCT.<br/>1-LAYER 5/8" GYPSUM BOARD (PAINTED)<br/>* TYPE X GWB WHERE ASSEMBLY FORMS PART OF 1HR FIRE SEPARATION @ 400MM O.C. SPACING WHERE ASSEMBLY FORMS PART OF 1HR FIRE SEPARATION</p> <p>P-1c<br/>SAME AS P-1a BUT REPLACE FRAMING WITH 2"x4" - REFER TO STRUCT.</p> |                |
| REQUIRED                     | PROVIDED                                                                                                                                                                                                                                                                                                                                                                                                                                                                | REFERENCE CODE |
| F.R.R.                       | -                                                                                                                                                                                                                                                                                                                                                                                                                                                                       | -              |
| STC                          | -                                                                                                                                                                                                                                                                                                                                                                                                                                                                       | -              |

FLOORS - SECTION VIEW

| CONCRETE SLAB ON GRADE |                                                                                                                                                                                                                                                                                              |                |
|------------------------|----------------------------------------------------------------------------------------------------------------------------------------------------------------------------------------------------------------------------------------------------------------------------------------------|----------------|
|                        | <p>F-1a<br/>* FLOOR FINISH PER SCHEDULE<br/>* MIN. 100MM (4") CONCRETE SLAB (SEE STRUC. DWGS)<br/>* 30 MM POLYETHYLENE VAPOR BARRIER<br/>* COMPACTED GRANULAR FILL AND/OR SUB-BASE PER GEOTECH</p> <p>F-1b<br/>SAME AS F-1a BUT REPLACE SEALED CONCRETE WITH SLIP-RESISTANT EPOXY FINISH</p> |                |
| REQUIRED               | PROVIDED                                                                                                                                                                                                                                                                                     | REFERENCE CODE |
| F.R.R.                 | -                                                                                                                                                                                                                                                                                            | -              |
| STC                    | -                                                                                                                                                                                                                                                                                            | -              |

ROOFS - SECTION VIEW

| METAL BUILDING MANUFACTURER ROOF |                                                                                                                                                                                              |                |
|----------------------------------|----------------------------------------------------------------------------------------------------------------------------------------------------------------------------------------------|----------------|
|                                  | <p>R-1<br/>* STANDING SEAM METAL ROOFING - GREY<br/>* STEEL PERLINS, REFER TO STRUCTURAL<br/>* R-40 INSULATION &amp; STEEL STRUCTURE. REFER TO METAL BUILDING MANUFACTURER SHOP DRAWINGS</p> |                |
| REQUIRED                         | PROVIDED                                                                                                                                                                                     | REFERENCE CODE |
| F.R.R.                           | NR                                                                                                                                                                                           | 1 HR           |
| STC                              | -                                                                                                                                                                                            | -              |

**ASSEMBLY NOTES:**

- FIRE RATED ASSEMBLIES ARE BASED ON CBC 2018, U.L. ICC, OR US GYPSUM ASSOCIATION (GA) TEST DATA & ARE TO BE CONSTRUCTED IN ACCORDANCE WITH REQUIREMENTS OF THE TESTING AGENCIES. REFER TO SPECIFIC TEXT REPORTS INDICATED FOR REQUIRED COMPONENTS & ASSEMBLIES.
- EXTENTS OF ASSEMBLIES ARE SHOWN ON THE PLANS & SECTIONS. SUITE AND CORRIDOR PARTITIONS TO EXTEND TO UNDERSIDE OF ROOF SHEATHING TO MAINTAIN FIRE COMPARTMENTS.
- ALL GWB IS TYPE 'X' UNDO.
- FIRE RATED ASSEMBLIES FORM A SEPARATION THAT SHALL BE CONTINUOUS FROM FLOOR TO STRUCTURE ABOVE WITH NO BREAKS AT COLUMNS, WALL TRANSITIONS OR OTHER OBSTRUCTIONS ALL PENETRATIONS IN FIRE RATED ASSEMBLIES REQUIRED TO HAVE PROTECTED OPENING SHALL BE FIRESTOPPED OR PROVIDED WITH APPROVED SHIELD AND/OR FIRE DAMPERS.
- PENETRATIONS IN UNIT DEMISING WALLS (OUTLET BOXES, ETC.) MUST BE NON COMBUSTIBLE OR HAVE FT FIRESTOPPING (PUTTY POKS) PER BC90 3.1.3.4 AND BE STAGGERED BY 24".
- SUBSTITUTE MOISTURE RESISTANT GWB AT WASHROOMS, JANITOR ROOMS & SIMILAR USES; MAINTAIN RATING WHERE REQUIRED. PROVIDE MOISTURE RESISTANT GWB BEHIND TUB ENCLOSURES.
- BLOCKING IS REQUIRED AT THE FOLLOWING LOCATIONS: CASEWORK, SHELVING & PANELING; WALL TELEVISION LOCATIONS, ACCESSORIES & EQUIPMENT, DOOR HARDWARE, TOILET PARTITIONS & ACCESSORIES;
- REFER TO MECHANICAL FOR DRAINAGE & WALL PENETRATION LOCATIONS.
- ALL PLUMBING/MECH WALL CAVITIES TO BE FILLED WITH ACOUSTIC FIBREGLASS BATTS.
- REFER TO DETAILS FOR BUILDING ENVELOPE INFORMATION.
- ACOUSTIC CALKING REQ'D AT FULL PERIMETER OF ALL PARTY WALLS/FLOORS.
- NO DRAINS OR OTHER MECH. LOCATED WITHIN WALL CAVITIES IS TO COME IN CONTACT WITH FRAMING.
- REFER TO STRUCTURAL FOR PLYWOOD SHEAR WALL LOCATIONS. LOCATE PLYWOOD ADJACENT TO G.W.B. SIDE IN SUITE DEMISING WALLS. NOT IN AIR SPACE.

| INTERIOR INSULATED WOOD STUD PARTITION |                                                                                                                                                                                                                                                                                                                                                         |                |
|----------------------------------------|---------------------------------------------------------------------------------------------------------------------------------------------------------------------------------------------------------------------------------------------------------------------------------------------------------------------------------------------------------|----------------|
|                                        | <p>P-1c<br/>1-LAYER 5/8" GYPSUM BOARD (PAINTED)<br/>2x4 WOOD FRAMING CW ACOUSTIC BATT - REFER TO STRUCT.<br/>1-LAYER 5/8" GYPSUM BOARD (PAINTED)</p> <p>P-1d<br/>SAME AS P-1c BUT REPLACE FRAMING WITH 2"x4" - REFER TO STRUCT.<br/>ADD 2-LAYERS 5/8" TYPE X GWB (PAINTED)<br/>UL DESIGN NO. U301: ASSEMBLY RATING 90 MINUTE, BEARING WALL ASSEMBLY</p> |                |
| REQUIRED                               | PROVIDED                                                                                                                                                                                                                                                                                                                                                | REFERENCE CODE |
| F.R.R.                                 | 45 MIN                                                                                                                                                                                                                                                                                                                                                  | 1 HR           |
| STC                                    | -                                                                                                                                                                                                                                                                                                                                                       | -              |

| TYPICAL SUSPENDED FLOOR |                                                                                                                                                                                                                                                                                                                                                        |                |
|-------------------------|--------------------------------------------------------------------------------------------------------------------------------------------------------------------------------------------------------------------------------------------------------------------------------------------------------------------------------------------------------|----------------|
|                         | <p>F-2a<br/>* FLOOR FINISH PER SCHEDULE<br/>* 5/8" D.F.R. PLYWOOD SHEATHING - REFER TO STRUCT.<br/>* 1/2" SERIES WOOD JOISTS, PRODUCT FIRE CLASS B-1 @ 12" O.C. MAX AS PER STRUCT (CROSS BRIDGING AS PER STRUCT)<br/>* 1-LAYER OF 1/2" TYPE X GYPSUM BOARD<br/>* RESILIENT CHANNEL @ 18" O.C.<br/>* 2-LAYERS OF 5/8" TYPE X GYPSUM BOARD (PAINTED)</p> |                |
| REQUIRED                | PROVIDED                                                                                                                                                                                                                                                                                                                                               | REFERENCE CODE |
| F.R.R.                  | 90 MIN                                                                                                                                                                                                                                                                                                                                                 | 90 MIN         |
| STC                     | -                                                                                                                                                                                                                                                                                                                                                      | -              |

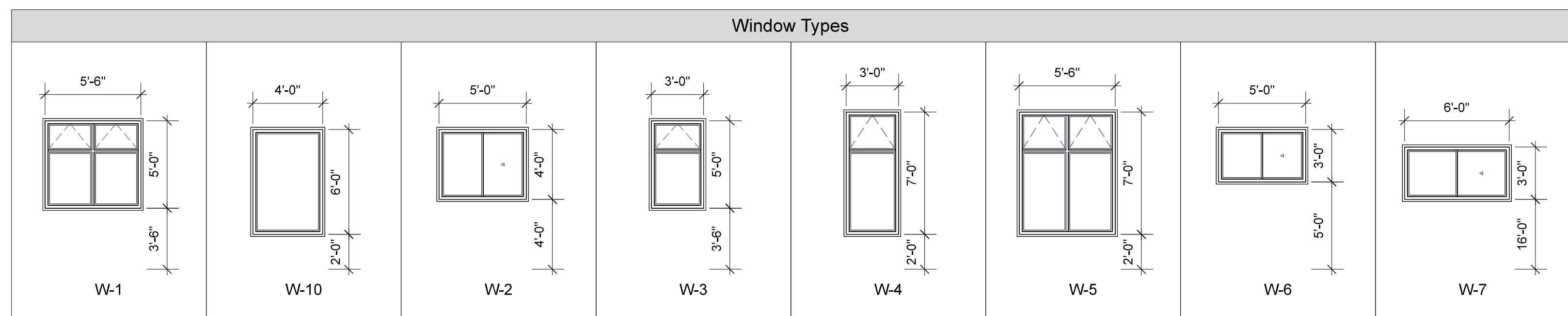
| CANOPY   |                                                                                                                                                                                                      |                |
|----------|------------------------------------------------------------------------------------------------------------------------------------------------------------------------------------------------------|----------------|
|          | <p>R-2<br/>* SLOPED STEEL PLATE TO GUTTER CHANNEL<br/>* STEEL JOISTS PER STRUCT.<br/>* RESILIENT CHANNEL @ 18" O.C.<br/>* WESTFORM PROBOARD SOFFIT W/ CONTINUOUS VENT STRIPS CW WOODGRAIN FINISH</p> |                |
| REQUIRED | PROVIDED                                                                                                                                                                                             | REFERENCE CODE |
| F.R.R.   | -                                                                                                                                                                                                    | -              |
| STC      | -                                                                                                                                                                                                    | -              |

| INTERIOR SHEAR WALLS |                                                                                                                                                                                                                                                                                                                                                                                                        |                |
|----------------------|--------------------------------------------------------------------------------------------------------------------------------------------------------------------------------------------------------------------------------------------------------------------------------------------------------------------------------------------------------------------------------------------------------|----------------|
|                      | <p>P-2a<br/>1-LAYER 5/8" TYPE X GYPSUM BOARD (PAINTED)<br/>2x4 FRAMING CW ACOUSTIC BATT - REFER TO STRUCT.<br/>1/2" SHEATHING - REFER TO STRUCT.<br/>1-LAYER 5/8" TYPE X GYPSUM BOARD (PAINTED)</p> <p>P-2b<br/>SAME AS P-1c BUT REPLACE FRAMING WITH 2"x4" - REFER TO STRUCT.<br/>ADD 2-LAYERS 5/8" TYPE X GWB (PAINTED)<br/>UL DESIGN NO. U301: ASSEMBLY RATING 90 MINUTE, BEARING WALL ASSEMBLY</p> |                |
| REQUIRED             | PROVIDED                                                                                                                                                                                                                                                                                                                                                                                               | REFERENCE CODE |
| F.R.R.               | 45 MIN                                                                                                                                                                                                                                                                                                                                                                                                 | 1 HR           |
| STC                  | -                                                                                                                                                                                                                                                                                                                                                                                                      | -              |

| TYPICAL SUSPENDED FLOOR |                                                                                                                                                                                                                                                                                                                                                              |                |
|-------------------------|--------------------------------------------------------------------------------------------------------------------------------------------------------------------------------------------------------------------------------------------------------------------------------------------------------------------------------------------------------------|----------------|
|                         | <p>F-2b<br/>* FLOOR FINISH PER SCHEDULE<br/>* 5/8" D.F.R. PLYWOOD SHEATHING - REFER TO STRUCT.<br/>* 1/2" SERIES WOOD JOISTS @ 12" O.C. MAX AS PER STRUCT (CROSS BRIDGING AS PER STRUCT)<br/>* FIBREGLASS BATT INSULATION (R=10 MIN) FRICTION FIT IN EACH CAVITY<br/>* RESILIENT CHANNEL @ 18" O.C.<br/>* 2-LAYERS OF 1/2" TYPE X GYPSUM BOARD (PAINTED)</p> |                |
| REQUIRED                | PROVIDED                                                                                                                                                                                                                                                                                                                                                     | REFERENCE CODE |
| F.R.R.                  | 45 MIN                                                                                                                                                                                                                                                                                                                                                       | 50 MIN         |
| STC                     | -                                                                                                                                                                                                                                                                                                                                                            | -              |

| METAL BUILDING MANUFACTURER ROOF |                                                                                                                                                                                              |                |
|----------------------------------|----------------------------------------------------------------------------------------------------------------------------------------------------------------------------------------------|----------------|
|                                  | <p>R-1<br/>* STANDING SEAM METAL ROOFING - GREY<br/>* STEEL PERLINS, REFER TO STRUCTURAL<br/>* R-40 INSULATION &amp; STEEL STRUCTURE. REFER TO METAL BUILDING MANUFACTURER SHOP DRAWINGS</p> |                |
| REQUIRED                         | PROVIDED                                                                                                                                                                                     | REFERENCE CODE |
| F.R.R.                           | NR                                                                                                                                                                                           | 1 HR           |
| STC                              | -                                                                                                                                                                                            | -              |

WINDOW SCHEDULE



| Nominal Size |            |            |             |
|--------------|------------|------------|-------------|
| Mark         | # OF UNITS | Unit Width | Unit Height |
| W- 1         | 4          | 5'6"       | 5'0"        |
| W- 2         | 4          | 5'0"       | 4'0"        |
| W- 3         | 4          | 3'0"       | 5'0"        |
| W- 4         | 5          | 3'0"       | 7'0"        |
| W- 5         | 1          | 5'6"       | 7'0"        |
| W- 6         | 2          | 5'0"       | 3'0"        |
| W- 7         | 5          | 6'0"       | 3'0"        |
| W- 10        | 1          | 4'0"       | 6'0"        |

DOOR SCHEDULE

| Door Types |          |                     |            |             |               |                       |                               |             |                   |                     |                |                   |
|------------|----------|---------------------|------------|-------------|---------------|-----------------------|-------------------------------|-------------|-------------------|---------------------|----------------|-------------------|
| Number     | Quantity | Location            | Leaf Width | Leaf Height | Configuration | Door Material         | Door Finish                   | Fire rating | Hardware          | Closer              | Stop           | Weather Stripping |
| D-1        | 1        | Main Entrance       | 36"        | 70"         | Swing         | PSF, Insulated        | White Factory Finish; Painted | N/A         | Lever w/ Deadbolt | Self-closing Device | Floor Stop     | Yes (smoke seal)  |
| D-2        | 1        | Mech Room           | 30"        | 70"         | Swing         | PSF, Insulated        | White Factory Finish; Painted | N/A         | Lever w/ Deadbolt | Self-closing Device | Floor Stop     | Yes (smoke seal)  |
| D-3a       | 1        | Garage              | 30"        | 70"         | Swing         | PSF, Insulated        | White Factory Finish; Painted | 45 Min      | Lever w/ Deadbolt | Self-closing Device | Floor Stop     | Yes (smoke seal)  |
| D-3b       | 1        | Garage Interior     | 30"        | 6'8"        | Swing         | PSF, Insulated        | White Factory Finish; Painted | 1 Hr        | Passage Lever     | Self-closing Device | Baseboard Stop | Yes (smoke seal)  |
| D-3c       | 2        | Garage              | 36"        | 70"         | Swing         | PSF, Insulated        | White Factory Finish; Painted | 45 Min      | Lever w/ Deadbolt | Self-closing Device | Floor Stop     | Yes (smoke seal)  |
| D-3d       | 1        | Garage              | 30"        | 70"         | Swing         | PSF, Insulated        | White Factory Finish; Painted | 45 Min      | Lever w/ Deadbolt | Self-closing Device | Baseboard Stop | Yes (smoke seal)  |
| D-4a       | 3        | Interior Passage    | 30"        | 6'8"        | Swing         | Wood Hollow-core      | Painted                       | N/A         | Passage Lever     | N/A                 | Baseboard Stop | N/A               |
| D-4b       | 1        | Interior Passage    | 33"        | 6'8"        | Swing         | PSF                   | White Factory Finish; Painted | 45 Min      | Passage Lever     | Self-closing Device | Baseboard Stop | N/A               |
| D-4c       | 1        | Interior Passage    | 30"        | 6'8"        | Swing         | PSF                   | White Factory Finish; Painted | 45 Min      | Passage Lever     | Self-closing Device | Baseboard Stop | N/A               |
| D-8a       | 2        | Bathroom            | 30"        | 6'8"        | Swing         | Wood Hollow-core      | Painted                       | N/A         | Privacy Lever     | N/A                 | Baseboard Stop | N/A               |
| D-8b       | 4        | Bathroom            | 24"        | 6'8"        | Swing         | Wood Hollow-core      | Painted                       | N/A         | Privacy Lever     | N/A                 | Baseboard Stop | N/A               |
| D-11       | 5        | Garage              | 120"       | 140"        | Overhead      | Fibreglass, Insulated | Charcoal Factory Finish       | N/A         | Manual Pulls      | Auto-Opener w/ Fob  | N/A            | Yes               |
| D-12       | 1        | Under Stair Storage | 28"        | 6'8"        | Swing         | Wood Hollow-core      | Painted                       | N/A         | Passage Lever     | N/A                 | Baseboard Stop | N/A               |